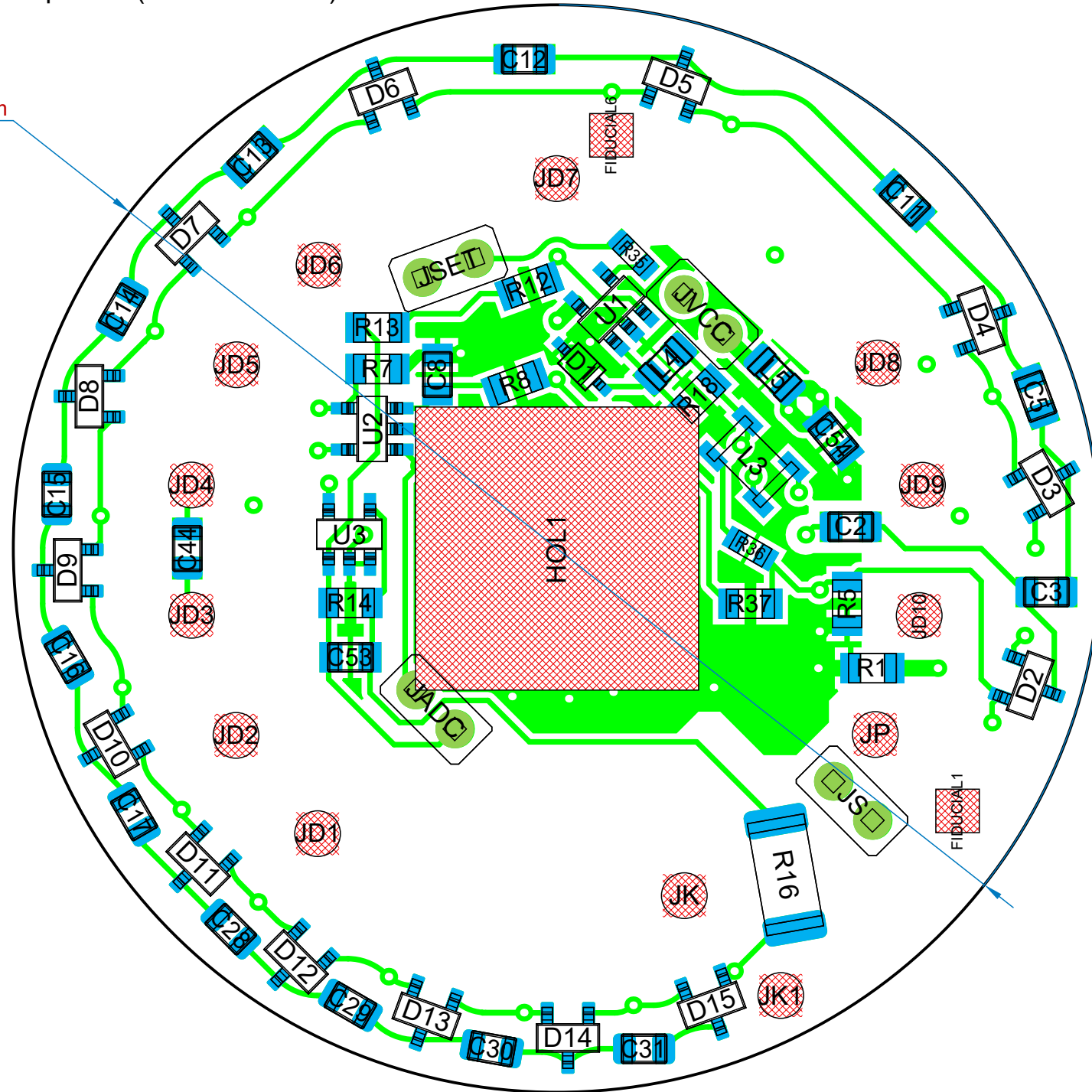
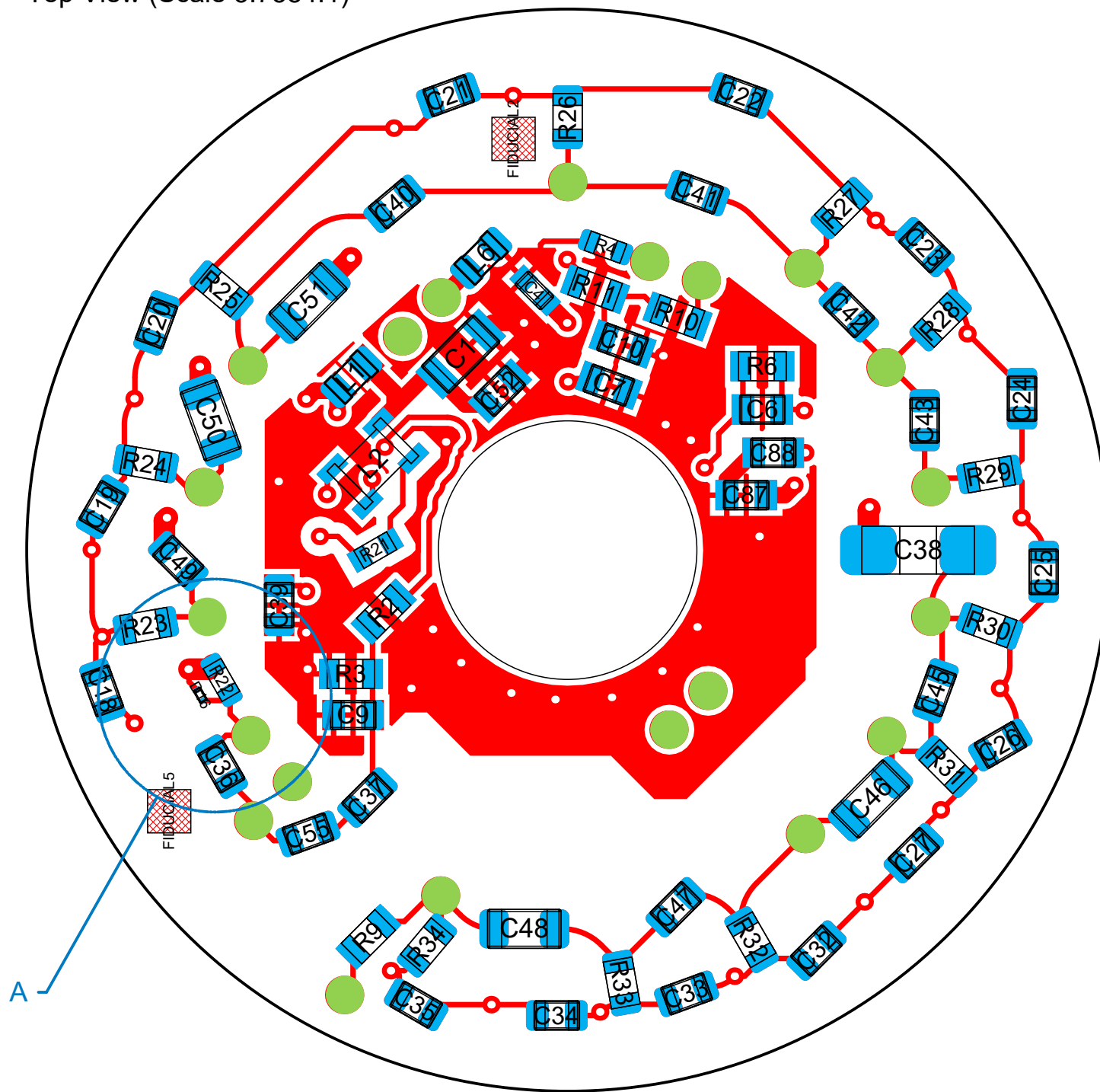


Top View (Scale 3.7584:1)

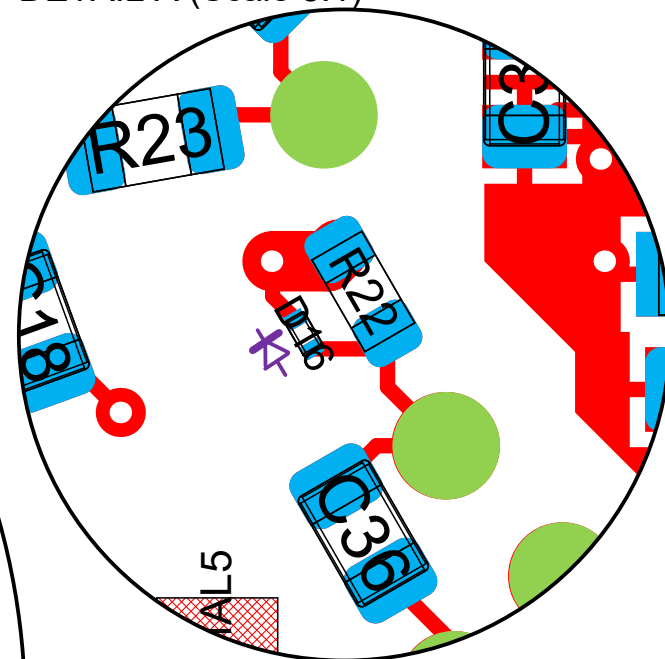
Ø50.00mm



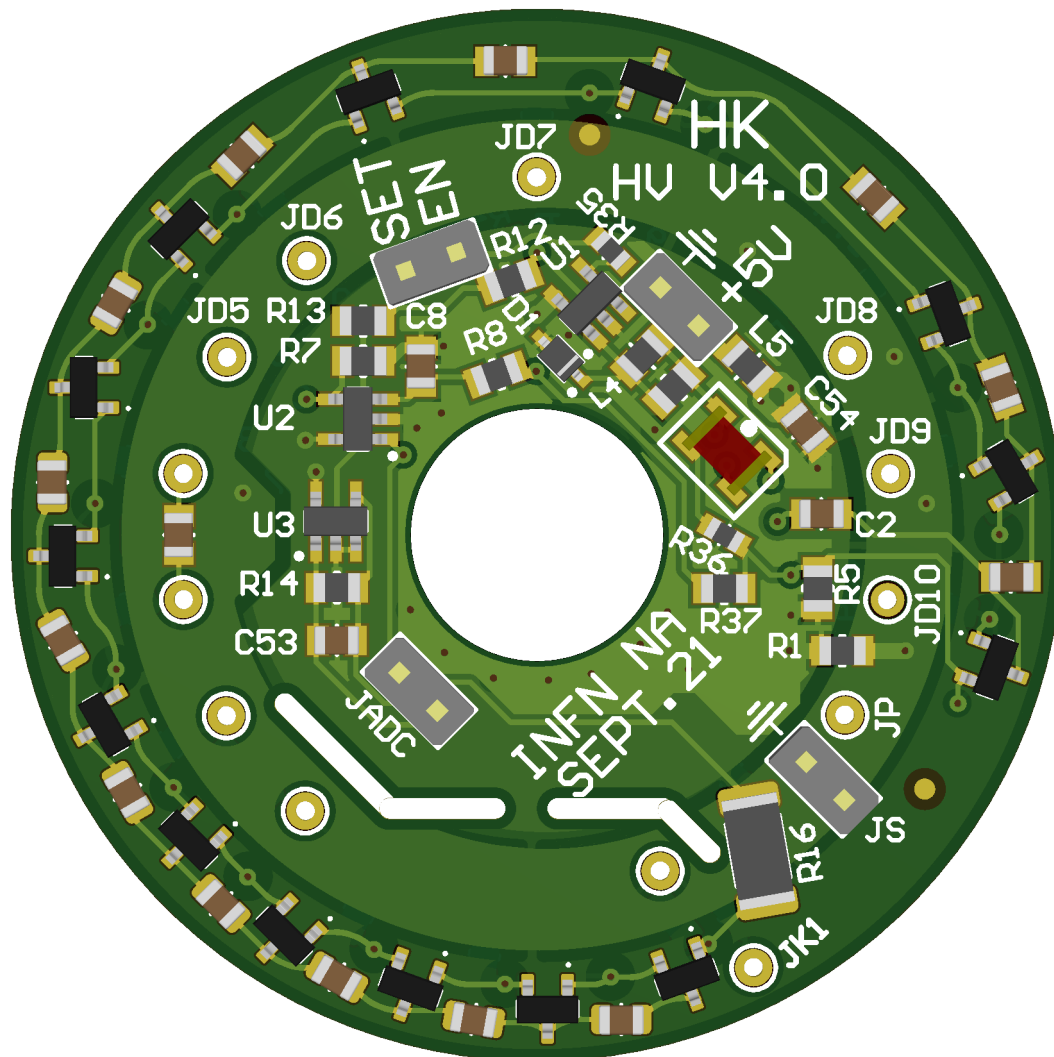
Top View (Scale 3.7584:1)



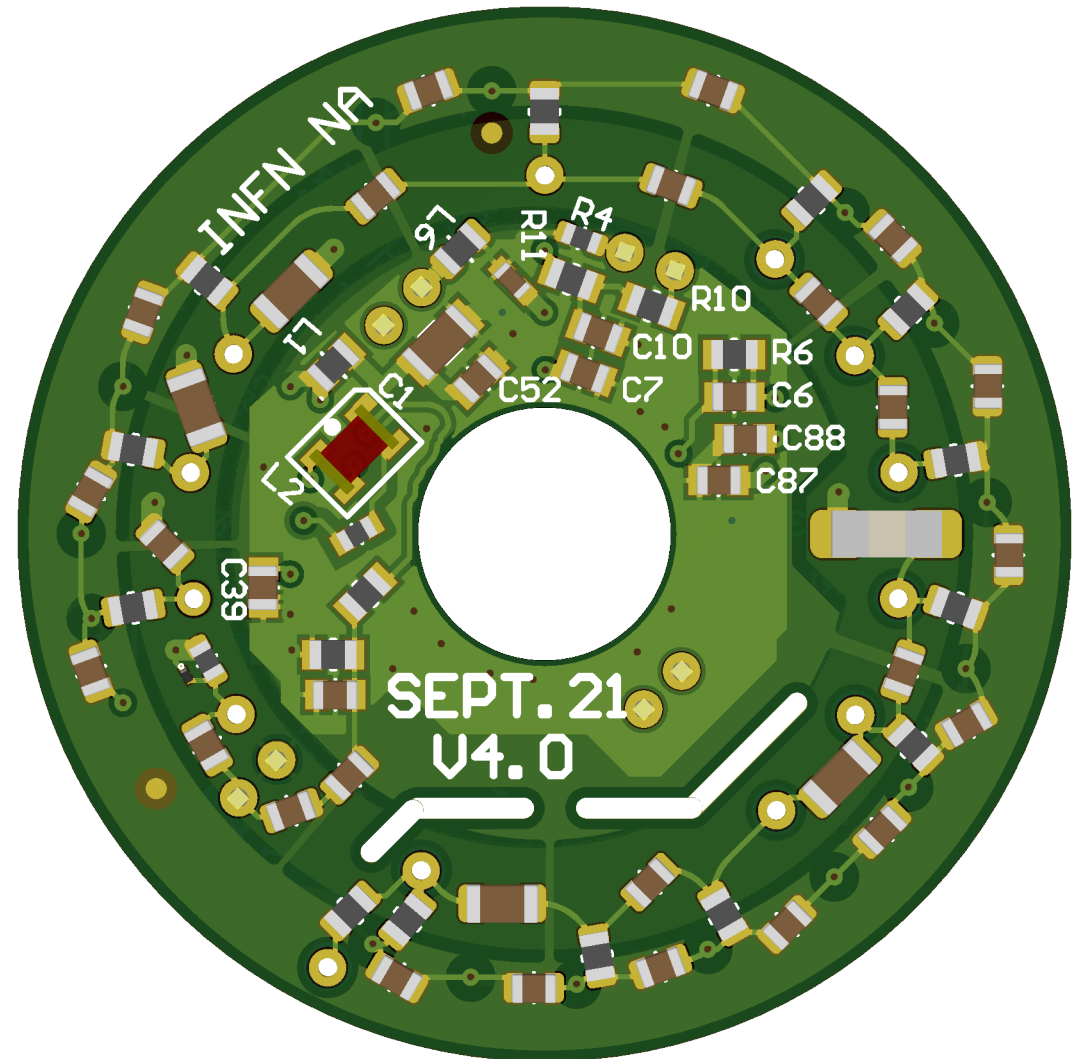
DETAIL A (Scale 8:1)



Top View



Bot View



| Bill Of Materials | | | | | | |
|-------------------|----------|--|------------------------|------------------|--------------------|------------------------------|
| Line # | Quantity | Designator | Comment | Footprint | Supplier 1 | Supplier Part Number 1 |
| 1 | 1 | C1 | 10uF | CAPC3216X140N | | |
| 2 | 37 | C2, C3, C5, C11, C12, C13, C14, C15, C16, C17, C18, C19, C20, C21, C22, C23, C24, C25, C26, C27, C28, C29, C30, C31, C32, C33, C34, C35, C39, C40, C41, C42, C43, C44, C45, C47, C49 | 100nF | CAPC2012X135N | Digikey, [NoParam] | 445-8778-1-ND, [NoParam] |
| 3 | 1 | C4 | 2.2uF | CAPC1608X90N | | |
| 4 | 1 | C6 | 1uF | CAPC2012X135N | | |
| 5 | 1 | C7 | 3,3uF | CAPC2012X135N | | |
| 6 | 5 | C8, C52, C54, C87, C88 | 1uF | CAPC2012X135N | | |
| 7 | 1 | C9 | 5pF | CAPC2012X135N | | |
| 8 | 1 | C10 | 4.7uF | CAPC2012X135N | | |
| 9 | 1 | C36 | 10nF | CAPC2012X135N | | |
| 10 | 2 | C37, C55 | 1pF | CAPC2012X135N | | |
| 11 | 1 | C38 | Capacita | C1808 | | |
| 12 | 4 | C46, C48, C50, C51 | 100nF | CAPC3216X110N | | |
| 13 | 1 | C53 | 47pF | CAPC2012X135N | | |
| 14 | 1 | D1 | CDSOD323-T18L | SOD2512X110N | Farnell | 2341939 |
| 15 | 14 | D2, D3, D4, D5, D6, D7, D8, D9, D10, D11, D12, D13, D14, D15 | BAV23S | SOT23-3 | Mouser | 621-BAV23S-7-F |
| 16 | 1 | D16 | ESD102U102ELSE632XTSA1 | TSSLP-2-3 | Digi-Key | ESD102U102ELSE6327XTSA1CT-ND |
| 17 | 4 | JADC, JS, JSET, JVCC | STRIP 1X2 Female | JP2_DIP - F | Mouser | 200-DW0210TS400 |
| 18 | 3 | L1, L5, L6 | 330R@100MHz | INDC2012X105N | | |
| 19 | 2 | L2, L3 | ATB322524-0110 | ATB3225 | RSComponents | 831-9315 |
| 20 | 1 | L4 | 120R@100MHz | INDC2012X105N | | |
| 21 | 1 | R1 | 3R3 | RESC2012X60N | | |
| 22 | 3 | R2, R6, R7 | 100K | RESC2012X60N | | |
| 23 | 1 | R3 | 4K9 | RESC2012X60N | | |
| 24 | 1 | R4 | 10K | RESC1608X55N | | |
| 25 | 1 | R5 | 100k | RESC2012X60N | | |
| 26 | 1 | R8 | 470K | RESC2012X60N | | |
| 27 | 1 | R9 | 1G | RESC2012X60N | Digi-Key | A106115CT-ND |
| 28 | 1 | R10 | 33K | RESC2012X60N | | |
| 29 | 1 | R11 | 66K | RESC2012X60N | | |
| 30 | 1 | R12 | 470 | RESC2012X60N | | |
| 31 | 1 | R13 | 160K | RESC2012X60N | | |
| 32 | 1 | R14 | 2,2M | RESC2012X60N | | |
| 33 | 1 | R16 | 1G | RESC5226X80N | Farnell | 2420352 |
| 34 | 1 | R18 | 3,3 | RESC2012X60N | | |
| 35 | 2 | R21, R36 | 100 | RESC1608X55N | | |
| 36 | 1 | R22 | 220K | RESC1608X55N | | |
| 37 | 1 | R23 | 330K | RESC2012X60N | | |
| 38 | 1 | R24 | 680K | RESC2012X60N | | |
| 39 | 1 | R25 | 1M | RESC2012X60N | | |
| 40 | 9 | R26, R27, R28, R29, R30, R31, R32, R33, R34 | 3M3 | RESC2012X60N | | |
| 41 | 1 | R35 | 100 | RESC1608X55N | | |
| 42 | 1 | R37 | 10K | RESC2012X60N | | |
| 43 | 1 | U1 | MIC2251-1YD5TR | SOT95P280X110-5N | Digikey | 576-3992-1-ND |
| 44 | 2 | U2, U3 | NCS333SN2T1G | SOT95P280X100-5N | RSComponents | 8742418 |