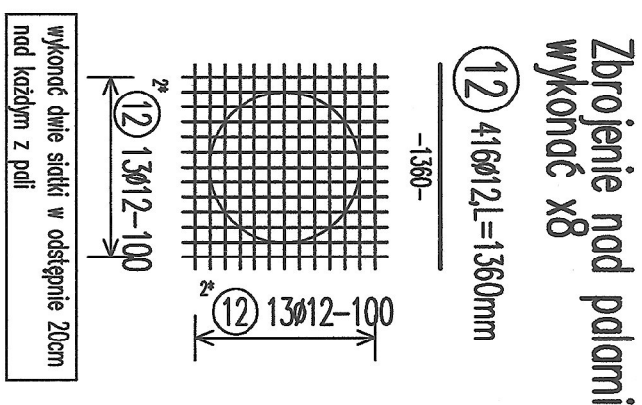
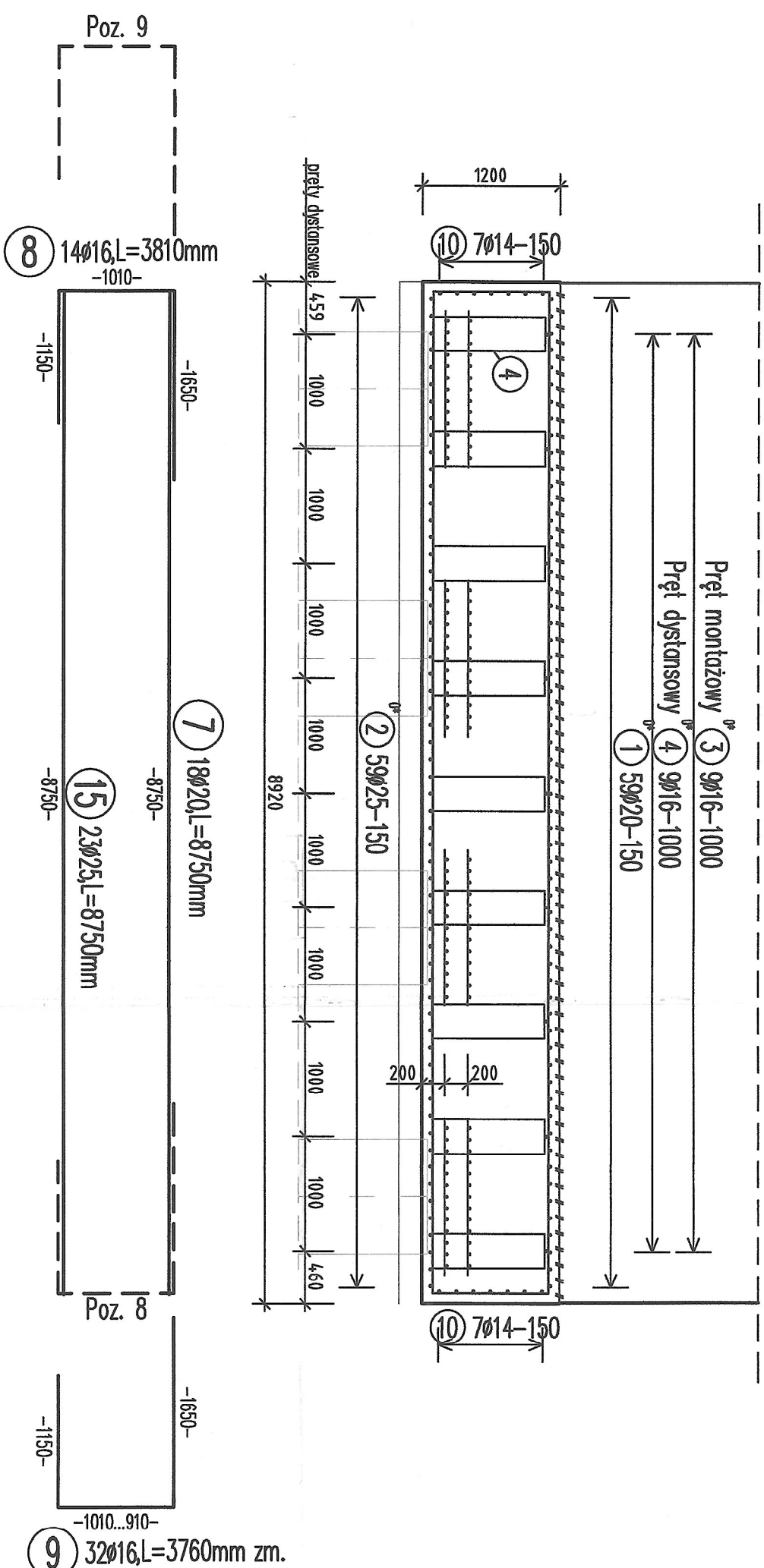
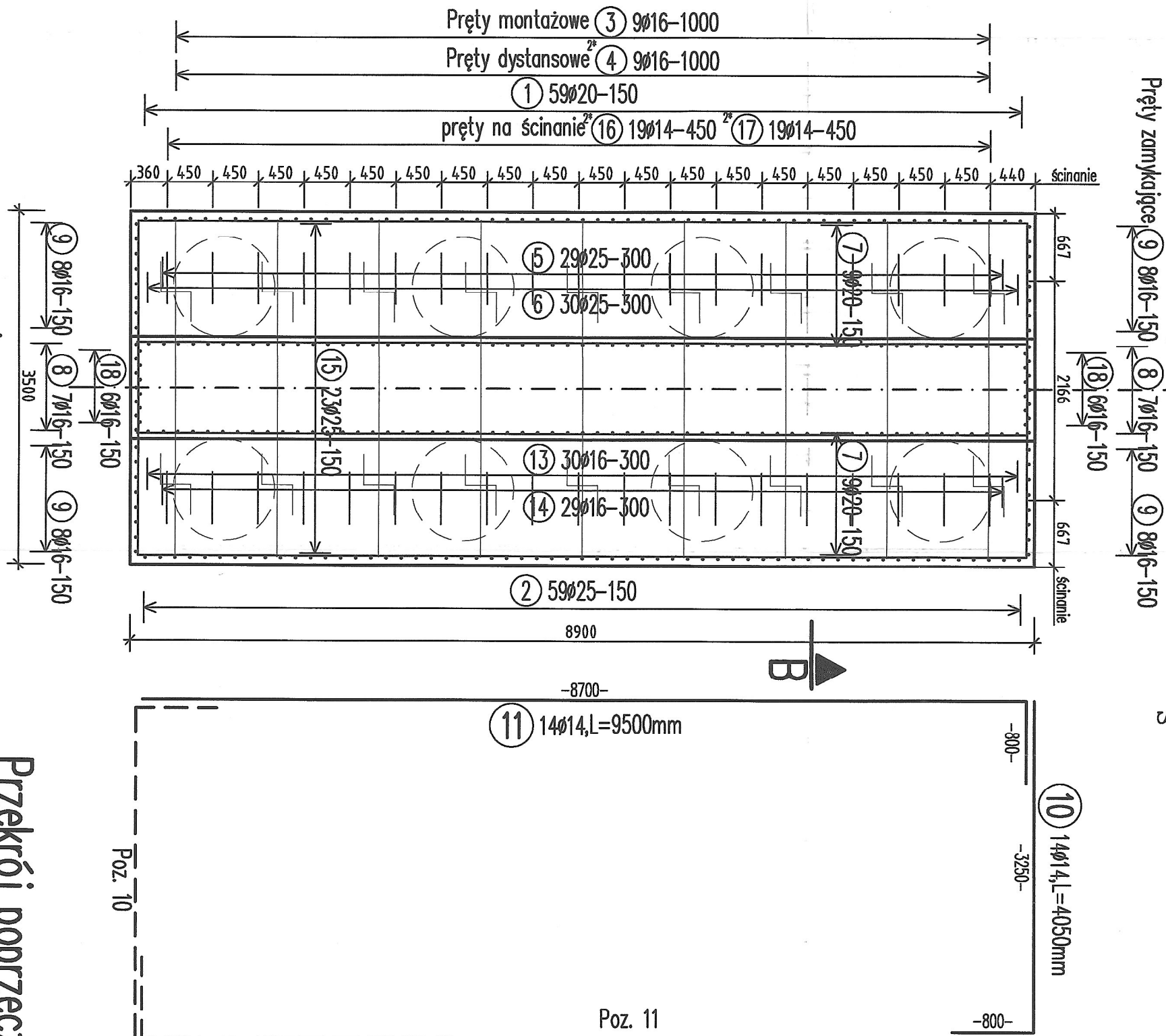
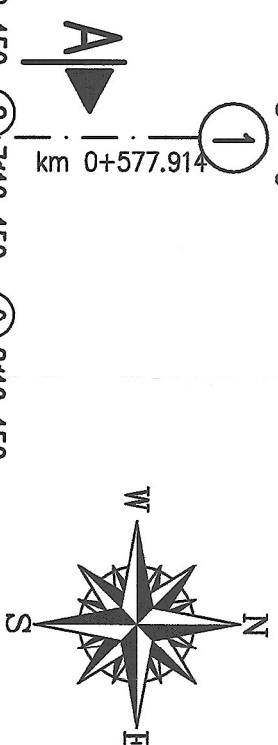
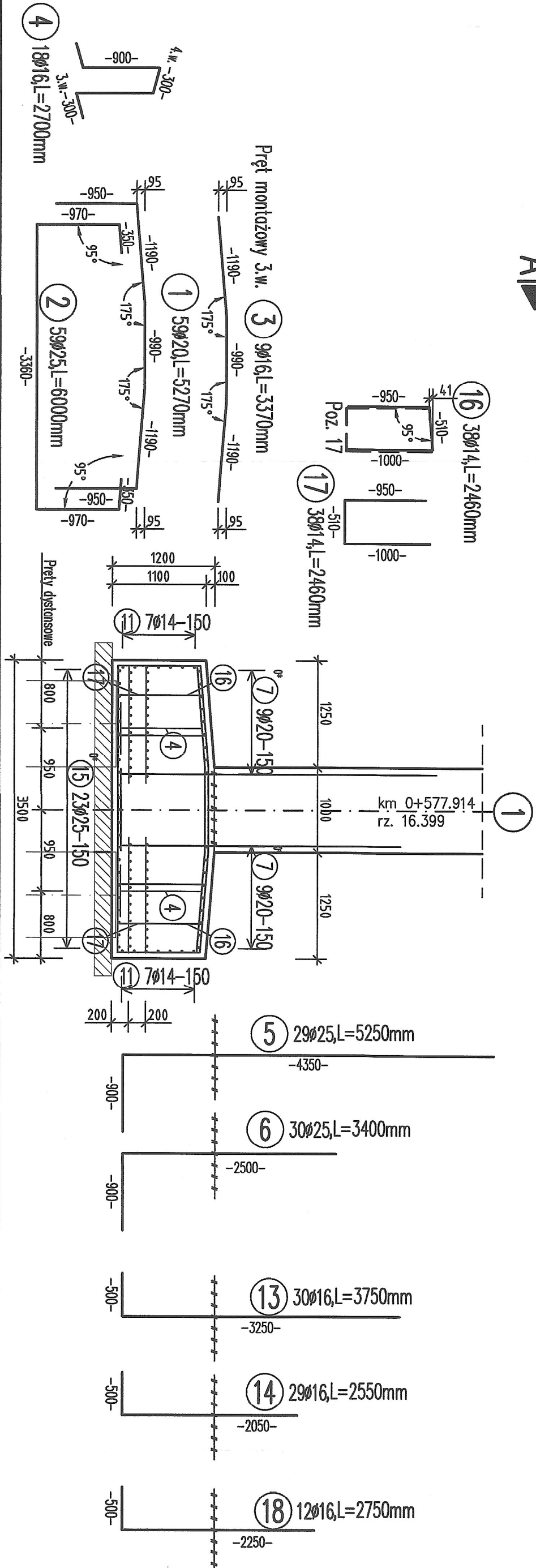


Widok z góry skała 1:50



Przekrój poprzeczny B-B skala 1:50



ZESTAVLENIE STÁLÍ ZKRÚTENÉJ KUSA STAVIA A-111N									
Poz.	szét.	d	Dugóssz	D12	D14	D16	D20	D25	
1	59	20	5, 27				310, 93		
2	59	25	6, 00					354, 00	
3	9	16	3, 37				30, 33		
4	18	16	2, 70				48, 60		
5	29	25	5, 25					152, 85	
6	30	25	3, 40					102, 00	
7	18	20	8, 75						157, 50
8	14	16	3, 81				53, 34		
9	32	16	3, 76*				120, 32		
10	14	14	4, 05		56, 70				
11	14	14	9, 50		133, 00				
12	416	12	1, 36	565, 76					
13	30	16	3, 75				112, 50		
14	29	16	2, 55				73, 95		
15	23	25	8, 75					201, 85	
16	38	14	2, 46		93, 48				
17	38	14	2, 46		93, 48				
18	12	16	2, 75			33, 00			
* at: strednia									
Colik.	atugóssz		565, 76	376, 66	472, 04	468, 43	809, 50		
kg / m			D12 0, 898	D14 1, 210	D15 1, 580	D20 2, 470	D25 3, 850		
kg / d			502, 395	453, 739	743, 823	1137, 022	3116, 575		
Masa colik.	(kg)		5977, 574						

[illegible]