

- 5
- 7 WK 13 IIIp.
- 9 WK 10 IIp.
- 12 WK 7 Ip.

- 1 18
- 2 13
- 3 14
- 4 18 WK + Okap 2 part.
- 5 20
- 6 17
- 7 14 WK + okap 6 Ip.
- 8 13
- 9 6 WK 12 IIIp.
- 10 10 WK 9 IIp. "E"
- 11 12 WP 12 IIIp.
- 12 17
- 13 19 WK okap 12 IIIp.

WP 2 part.

3

- 1 6
- 2 12
- 3 12
- 4 8
- 5 8
- 6 16 WK + WL 3 part.
- 7 12
- 8 12

6

- 1 11
- 2 13
- 3 13
- 4 14

- 4
- 6 WWC 12 IIIp. "E"
- 13 WWC 6 Ip.
- 7 WWC 9 IIp. "E" + WWC 2 part.
- 6 WL 12 IIIp. "E"
- 15 WL 6 Ip.
- 14 WL 2 part. "E"
- 12 WL 6 Ip.
- 9 WL 9 IIp.
- 9 6

- 5 5
- 6 10 WL 10 IIp. + WK 10 IIp.
- 8 14 WK 4 part.
- 10 10 WL 7 Ip.
- 11 13 WL 13 IIIp.
- 13 15
- 16 16 WL 4 part.
- 18 15
- 19 14 WK 4 part.

8

7

- 1 11
- 2 10 WL 7 Ip.
- 3 16
- 4 14

- 9
- 2 9 WWC 5 part.
- 15 9 WC WL 8 Ip.
- 6 11 WWC 14 IIIp.
- 9 12 WL 11 IIp. "E"
- 13 12 WK okap 8 Ip.
- 15 14 WK okap 11 IIp.
- 6 15 8
- 7 6 15 8
- 8 16 16 21
- 5 part. WK 5 part.
- 14 IIIp. WL 14 IIIp.

10

- 1 13
- 2 13
- 3 12
- 4 13

11

- 1 1
- 2 22 PG CO piw.

Nawiew

Nawiew 7 Ip.

3

- 1 14 WK 4 part., WK 7 Ip.
- 2 8 RP 18 II Ip.
- 3 9 WK + okap 12 II Ip.
- 4 4 WP 18 II Ip. - sufit
- 5 18 WP 4 part.
- 6 17 P 4 part.
- 7 11 WK 7 Ip.
- 8 4 WK 17 III Ip. - żal.

- 4 12 WWC 9 Ip. "E"
- 3 13 WK/WWC 4 part. + WC 13 II Ip.
- 2 15 KOMINER 4 part. - nie czynny
- 1 10 WWC 18 III Ip.

1

- 1 6 WP 18 II Ip.
- 2 11 WŁ 9 Ip.
- 3 10 WP 13 II Ip.
- 4 14 WP 4 part.
- 5 8 WŁ 13 II Ip. "E"
- 6 8
- 7 14 WŁ 4 part.
- 8 4 WŁ 18 III Ip.
- 9 16 PGCO 4 part.
- 10 11 PG CO 9 Ip.
- 11 10 PG CO 13 II Ip. - zam.kom.
- 12 12 PG CO 18 II Ip. - zam.kom.
- 13 9 pobór powietrza do PG CO 18 II Ip.
- 14 16 Kominiek 4 part. - nieczynny
- 15 7 WP 18 III Ip. - żaluzja
- 16 12 WP 4 part. - żaluzja
- 17 9 WP 13 II Ip.
- 18 5

2

- 1 10 WWC 18 III Ip.
- 2 15 KOMINER 4 part. - nie czynny
- 3 13 WK/WWC 4 part. + WC 13 II Ip.
- 4 12 WWC 9 Ip. "E"

4

- 1 4 PGCO 17 III Ip.
- 2 8 WŁ 12 II Ip.
- 3 8 PG CO 12 II Ip.
- 4 12 PGCO 7 Ip.
- 5 12 WŁ 7 Ip.
- 6 14 WŁ 4/5 part.
- 7 14 PG 4/5 part.
- 8 5 WŁ 17 III Ip. - żal.

7

- 1 6 WP 12 II Ip.
- 2 14 WP 17 III Ip.
- 3 14 WP 17 III Ip.
- 4 7 WP 12 II Ip.
- 5 16 WP 7 Ip.
- 6 6

1 15 RK 2 part. - PROJEKT OKAF

- 3 14 WK 2 part.
- 4 15 WK 2 part.
- 5 15 WŁ 2 part.
- 6 15 WŁ 2 part.

10

- 1 14 WP 16 III Ip.
- 2 15 WP 7 Ip.
- 3 11 WP 7 Ip.
- 4 5 WP 16 III Ip.

11

- WP 11 p. 1 8
- 2 17
- WP 2 part. 3 17
- WP 6 Ip. 4 14
- WP 16 III Ip. 5 16
- WŁ 16 III Ip. 6 15
- WŁ 1 part. 7 17
- WŁ 11 II Ip. 8 8
- WŁ 6 Ip. 9 11
- PG 11 II Ip. 10 9
- PG CO 1 part. 11 13
- PG 6 Ip. 12 13
- PG CO 16 III Ip. 13 5
- 14 11
- okap + WWC 1 part. 15 14
- 16 6
- WP 16 III Ip. 17 5
- WP 1 part. 18 15
- WP 6 Ip. 19 9

12

- 1 4 OK-AP 18 II Ip.
- 2 14 OKAP 9 Ip.
- 3 5 b c WK 9 Ip. drzwi czki 18 II Ip.
- 4 16 WP 4/5 part.
- 5 11 Term. gaz. 9 Ip.
- 6 11 OK-AP 13 II Ip.

8

- 1 8 Okap 16 II Ip.
- 2 12 PG CO 6 Ip.
- 3 10 WK 6 Ip.
- 4 14
- 5 10 Term. gaz. 6 Ip.
- 6 7 WK 11 II Ip. - żaluzja

9

- 1 4 WK 16 III Ip. - żaluzja
- 2 4 WC 16 III Ip. - zakleciona

WK 13 II Ip.

AN

11
 WP 40 Vp. 17
 20
 WK 40 Vp. 4

4
 WC 23 IVp. 5
 WC 20 IIIp. 6/7
 WC 17 IIp. 7/10
 WC 11 p. 8/15
 WC 14 Ip. 9/13

12
 WL 37 Vp. 4
 17
 4
 7
 WK 11 p. 5
 17
 6
 15
 7
 12
 8
 9
 7
 WK + okap 14 Ip. 10
 WK + okap 17 IIp. 11
 10
 WK 20 IIIp. 12
 WK 23 IVp. 13
 5

9
 WK/WP 37 Vp. 10
 2
 WC 4 Ip. 8/13
 WC 2 p. 7/15
 WC 6 IIp. 6/10
 WC 8 IIIp. 5/7
 WC 10 IVp. 3/4
 WL 11+14+17+20+23. 16

8
 WK 36 Vp. 10
 2

4
 WC 9 IVp. 3/4
 WC 7 IIp. 4/7
 WC 5 IIp. 5/10
 WC 3 Ip. 8/13
 WC 1 p. 9/16
 WL 2p+4 Ip+6 IIp+8 IIIp+10 IVp. 16

7
 WC 9 IVp. 3/4
 WC 7 IIp. 4/7
 WC 5 IIp. 5/10
 WC 3 Ip. 8/13
 WC 1 p. 9/16
 WK 36 Vp. 10
 2

6
 WK 10 IVp. 7
 WK 8 IIp. 9
 WK 2 p. 17
 WK 4 Ip. 14
 WK 6 IIp. 11
 WP 10 IVp. 5

WL 1p+3 Ip+5 IIp+7 IIIp+9 IVp. 18

3

2
 WK 9 IV p. 3
 6
 13
 WK 3 Ip. 7
 15
 WK 7 IIIp. 8
 17
 WK 5 IIp. 3
 10
 17
 11
 8
 12
 5
 13
 14
 15
 3
 16
 17
 18
 19
 20
 21
 22
 WP 7 IIIp. 10
 WP 7 IIIp. 10

1
 WK 42 p. 2
 WP 42 p. 2
 WL 42 p. 2
 SL 12

WP 42 p. 6_2

ul Koszykowa 75 Mieszkalny - 2022 r

WL Vp. 1 3 5 9 WK 21 IIIp.
 WC Vp. 2 5 6 2 WP 41 Vp.
 WK 41 Vp. 3 3
 WK 24 Vp. 4 4

(14)

WK 18 IIp. 1 12
 WK 15 Ip. 2 15
 WK 12 p. 3 15

(15)

4 17 WC 13+16+19+22+25.
 5 17 WC 12+15+18+21+24.

3M15 4P10 WC 26 p. 3M15
 4P10 WC 30 IIp. 4P10
 5M13 WC 28 Ip. 5M13
 6P17 WC 32 IIIp. 6P17
 7M4 WC 34 IVp. 7M4

(16)

1 16 WL 13+16+19+22+25.

(17) WK 38 Vp. II B

(18)

WK 39 Vp. II B

(20)
 1 6
 2 10
 3 10
 4 12
 5 17
 6 5
 7 14 WK 28 Ip.
 8 17 WK 26 p.
 9 6 WK 32 IIIp.
 10 4 WK 34 Vp.

3M15 4P14 WC 27 p. 3M15
 4P14 WC 31 IIp. 5M10
 6M4 7M13 WC 29 Ip. 7M13
 8P17 WC 33 IIIp. 8P17
 9M4 WC 35 IVp. 9M4

(19)

1 16 WL 26+28+30+32+34.

(21)

II 14 WK 35 IV.
 2 14 WL 35 IVp.
 3 17 7 5
 4 17 8 17 WK 31 IIp.
 5 17 WK 33 IIIp. 5 17
 6 17 WK 27 p. 6 17

(22)

II 17 WL 27+29+31+33+35+WP 35 IVp.

(23)

II 12 WC 43 p. 2 12
 3 12 WP 43 p. 3 12
 4 12 WK okap 43 p. 4 12
 5 12

(24)

1 2 WP 43 p.

(13)
 1 4 WK 38a Vp.
 2 7
 3 4
 4 12
 5 17 WK 13 p.
 6 17 WK 13p.
 7 17
 8 14 WK okap 16 Ip.
 9 10 WK 19 IIp.
 10 7 WK 22 IIIp.
 11 3 WK okap 25 IVp.

64

- 1 1 4
- 2 18 WL 21 part.
- 4 1 13
- 2 10 WP 24 II Ip.
- 3 15 WP 22 Ip.
- 4 5
- 5 6 WP 25 IVp.
- 6 17
- 7 6

- WL 22 Ip. 1 15 4 18
- WL 24 IIp. 2 9 5 12 WL 23 IIp. "E."
- WL 26 Vp. 3 3 6 6 WL 25 IVp.

- WP 21 part. ZAAG 1 6
- WP 22 Ip. 3 17 4 14
- WP 24 IIIp. 5 9 6 14
- WP 22 Ip. 1 6 5 3
- WP 24 IIIp. 2 10 6 3
- WP 21 part. 3 17 7 20 WWC 21 part.
- WP 22 Ip. 4 7 8 3

- 1 11 WWC 23 IIp. "E"
- 2 6 WWC 25 IVp.
- 3 3 WWC 26 Vp.
- 4 2

- 6 11 WK 22 IIp. - (z) b.ciągu
- 7 9
- 8 10
- 9 12 WK + okap 23 Ip.
- 10 9 WK 24 IIIp.
- 11 4 WK 26 Vp.
- 12 6 WK 25 IVp. - zaluźa

- 2 14 WK okap 4 Ip.
- 3 6
- 4 13
- 5 9 WK 8 IIIp.
- 6 7 WK + okap 10 IVp.
- 7 10
- 8 11
- 9 11
- 10 22 WP 2 A part.
- 11 17 WK 4 Ip.
- 12 14 WK 6 IIp.
- 13 4 WK 12 Vp.

(8)

7

6

5

3

2



9
1 2
3 3

10
1 2
21 6

11
1 7 WWC 10 IVp.
2 11 WWC 8 IIIp.
3 15 WWC 6 IIp.
4 19 WWC 4 Ip. - gruz
5 4 WWC 12 A Vp. "E"

11 21 WWC 2 A part.
12 18 WWC 4 Ip.
13 12 WWC 12 Vp.
14 3 WWC 12 Vp.

13

12
1 22
2 18
3 11
4 5 WL 4 Ip.
5 17
6 12 WL 8 IIIp.
7 13 WL 6 IIp.
8 8
9 8 WL 10 IVp.
10 5 OKAP 12 Vp.
11 6 WL 12 Vp. "E"
12 3
13 3
14 16 WK 2 part.
15 3

14
11 10 WP 10 IVp.
12 19 WWC 12 Vp.
13 16 WWC 6 IIp.
14 11 WWC 8 IIIp.
15 8 WWC 10 IVp.
16 12 WP 2 part.
17 14 WP 12 Vp.

15
1 16
2 11
3 12
4 7
5 5 WP 12 Vp.
6 5

16
1 13
2 14
3 16
4 19
5 12
6 15
7 19 WL 1 part.
8 19 WK 1 part.
9 12
10 11
11 17

17
11 17
12 15 WP 3 Ip.
13 15
14 12
15 7 WP 9 IVp.
16 14

18
1 14
2 17
3 18
4 11
5 11

7



(21)	1 1 1	WK - okap 11 Vp.	(22)	1 5	WK 20 Vp.
	2 5	WP 5 Ilp.		2 19	WK 18 IIIp.
	3 15	WK - okap 3 A Ip.		3 13	
	4 18	żaluzja - WK 13 part.		4 15	
	5 24	WP 7 IIIp.		5 4	
	6 11			6 1	
	7 2			7 6	
	8 18			8 17	WK 16 Ip.
(20)	9 7	WL 13 part.		9 20	WK 15 part.
	10 20	WK 9 IVp.		10 14	WK 17 Ilp.
	11 4			11 5	
	12 6			12 8	WK 19 IVp.
	13 7				
	1 0	WP 7 IIIp.			
(19)					
	1 4	WP 11 Vp.			
	2 7				
	3 11				
	4 8				
	5 15				
	6 17				
	7 12				
	8 9				
	9 4				

(23)
1 0 4 0
2 0 0
3 0 0

(24)

WWC 16 Ip. 1 15 4 18 WWC 15 part. "E"
 WWC 18 IIIp. 2 9 5 12 WWC 17 Ilp.
 WWC 20 Vp. 3 3 6 6 WWC 19 IVp.

(5)	1 16	WKC 3 Ip.	(9)	1 7	WL 16 Ip.
	2 12	WK+okap 3 Ip - zagr.		2 17	WL 19 IVp.
	3 18	OKAP 14 part.		3 8	
	4 8	WP 9 IVp.		4 7	WL 20 Vp.
	5 6	WKC 11 Vp.		5 7	WL 16 Ip.
	6 10	WP 7 IIIp.		6 10	
	7 7	WL 7 IIIp.		7 19	WL 16 Ip.
	8 12	WKC 5 Ilp.		8 22	WL 15 part.
	9 6	WKC 9 IVp.		9 17	WL 18 IIIp.
	10 20	WL 14 part.		10 17	WL 17 IIIp.
	11 12	WP 14 part.		11 12	
	12 17	WL 3 Ip.		12 6	
	13 12	WKC 5 Ilp.			
	14 15	WL 3 A Ip.			
	15 4	WL 11 Vp.			
	16 6	WL 9 IVp.			
	17 8	WP 9 IVp.			
	18 7	WK 7 IIIp.			
	19 13	WKC 5 Ilp.			
	20 18				
	21 13	WWC 3 A Ip.			
	22 18				
	23 13				
	24 13				
	25 8				
	26 7	WKC 7 IIIp.			
	27 4	Wpralnia 11 IVp.			

28 3
29 8
30 9
31 16 WWC 3 A Ip.

1	2	3	4	5	6	7	8	9	10	11	12	13
1 23 W Bar part.	1 3 WP 34 Vp.	1 0 WK 34 Vp.	7 18 WL 35 Vp.	1 0 WK 18 IIIp.	1 18 12 18 WL 5 Ip.	1 23 W wezel sut.	8 12 9 6 WL 28 IVp.	1 0 "E" WK 18 IIIp.	12 18 12 18 WL 33 Vp.	1 2 W Bar sut.	12 12 WK 23 IVp.	13 W Bar part.
2 23 W Bar part.	2 3 WP 34 Vp.	2 17 WK-okap 5 Ip.	8 12 9 6 WL 35 Vp.	2 12 13 12 WL 33 Vp.	2 12 13 12 WL 33 Vp.	14 11 WK 21 IIIp.	2 9 WL 28 IVp.	2 17 WK-okap 5 Ip.	2 12 13 12 WL 33 Vp.	2 2 WL Bar part.	13 20 WK 23 IVp.	1 26 W Bar part.
3 20 WK 6 Ip.	3 3 WP 34 Vp.	3 11 WK 19 IIIp.	10 16 WL 21 IIIp.	3 6 14 6 WL 33 Vp.	3 6 14 6 WL 33 Vp.	15 8 WK 7 Ip.(z).	3 8 WL 21 IIIp.	3 11 WK 19 IIIp.	3 6 14 6 WL 33 Vp.	3 3 WL Bar part.	14 16 WK-okap 16 IIIp.	2 26 W Bar part.
4 19 WK 6 Ip.	4 12 WP 34 Vp.	4 6 WK 33 Vp.-zal.	11 20 WL 21 IIIp.	4 4 15 5 WL 33 Vp.	4 4 15 5 WL 33 Vp.	16 1 WK 7 Ip.(z).	4 11 11 20 WL 21 IIIp.	4 6 WK 33 Vp.-zal.	4 12 13 12 WL 33 Vp.	4 5 WP 30 Vp.	15 16 WK-okap 16 IIIp.	3 20 W Bar part.
5 13 WK 6 Ip.	5 7 WP 34 Vp.	5 9 WK 26 IVp.-zal.	12 20 WL 21 IIIp.	5 9 16 9 WL 33 Vp.	5 9 16 9 WL 33 Vp.	17 1 WK 7 Ip.(z).	3 8 WL 21 IIIp.	5 9 WK 26 IVp.-zal.	5 2 17 17 WL 33 Vp.	5 9 WP 29 Vp. "M"	16 12 WK-okap 16 IIIp.	4 22 W Bar part.
6 16 WK 6 Ip.	6 2 WP 34 Vp.	6 14 WK 12 IIp. "E"	13 20 WL 21 IIIp.	6 17 17 17 WL 4 Ip.	6 17 17 17 WL 4 Ip.	18 13 7 WL 7 Ip.	4 11 11 20 WL 21 IIIp.	6 14 WK 12 IIp. "E"	6 5 13 13 WL 36 Vp.	6 11 WP 15 IIIp.	17 14 WK-okap 16 IIIp.	5 20 W Bar part.
7 6 WK 6 Ip.	7 10 WP 35 Vp.	7 15 WK 12 IIp. "E"	14 11 WK 21 IIIp.	7 15 18 13 WL 5 Ip.	7 15 18 13 WL 5 Ip.	19 8 WK 7 Ip.(z).	5 15 12 20 WL 14 Ip.	7 15 WK 12 IIp. "E"	7 14 WP 30 Vp.	7 14 WP 15 IIIp.	18 14 WK-okap 30 Vp.	6 18 W Bar part.
8 20 WK 6 Ip.	8 10 WP 27 IVp.	8 9 WK 13 IIp.	15 8 WK 7 Ip.(z).	8 11 19 15 WL 19 IIIp.	8 11 19 15 WL 19 IIIp.	16 1 WK 7 Ip.(z).	12 20 WL 14 Ip.	8 9 WK 13 IIp.	8 16 WP 1 part.	8 16 WP 1 part.	19 14 WK-okap 30 Vp.	7 7 W Bar part.
9 7 WK 6 Ip.	9 11 WP 21 IIIp.	9 13 WK 13 IIp.	17 1 WK 7 Ip.(z).	9 3 20 4 WL 19 IIIp.	9 3 20 4 WL 19 IIIp.	17 1 WK 7 Ip.(z).	W wezel sut.	9 11 WP 21 IIIp.	9 12 WK WP 22 IVp.	9 12 WK WP 22 IVp.	20 14 WP 8 IIp.	8 10 W Bar part.
10 7 WK 34 Vp.	10 14 WP 13 IIp.	10 6 WK 33 Vp.-zal.	18 13 7 WL 7 Ip.	10 3 21 14 WL 11 IIp.	10 3 21 14 WL 11 IIp.	18 13 7 WL 7 Ip.	14 11 WK 21 IIIp.	10 14 WP 13 IIp.	10 10 WK 9 IIp.	10 10 WK 9 IIp.	21 14 WP 8 IIp.	9 7 W Bar part.
11 13 WK+okap 20 IIIp.	11 17 WP 6 Ip.	11 9 WK 26 IVp.-zal.	19 8 WK 7 Ip.(z).	11 3 22 15 WL 33 Vp.	11 3 22 15 WL 33 Vp.	19 8 WK 7 Ip.(z).	15 8 WK 7 Ip.(z).	11 17 WP 6 Ip.	11 14 WP 8 IIp.	11 14 WP 8 IIp.	22 12 WK 23 IVp.	10 4 W Bar part.
12 16 WK 13 IIp.	12 16 WP 7 Ip.	12 14 WK 12 IIp. "E"	16 1 WK 7 Ip.(z).	11 3 22 15 WL 33 Vp.	11 3 22 15 WL 33 Vp.	16 1 WK 7 Ip.(z).	16 1 WK 7 Ip.(z).	12 16 WP 7 Ip.	12 14 WP 8 IIp.	12 14 WP 8 IIp.	23 12 WK 23 IVp.	11 8 W Bar part.
13 12 WK 27 IVp.	13 16 WP 7 Ip.	13 15 WK 13 IIp.	17 1 WK 7 Ip.(z).	9 3 20 4 WL 19 IIIp.	9 3 20 4 WL 19 IIIp.	17 1 WK 7 Ip.(z).	17 1 WK 7 Ip.(z).	13 16 WP 7 Ip.	13 14 WP 8 IIp.	13 14 WP 8 IIp.	24 12 WK 23 IVp.	10 4 W Bar part.
14 23 W part.	14 16 WP 7 Ip.	14 6 WK 33 Vp.-zal.	18 13 7 WL 7 Ip.	10 3 21 14 WL 11 IIp.	10 3 21 14 WL 11 IIp.	18 13 7 WL 7 Ip.	17 1 WK 7 Ip.(z).	14 16 WP 7 Ip.	14 14 WP 8 IIp.	14 14 WP 8 IIp.	25 12 WK 23 IVp.	11 8 W Bar part.
15 19 WL 6 Ip.	15 19 WL 6 Ip.	15 9 WK 26 IVp.-zal.	19 8 WK 7 Ip.(z).	11 3 22 15 WL 33 Vp.	11 3 22 15 WL 33 Vp.	19 8 WK 7 Ip.(z).	17 1 WK 7 Ip.(z).	15 19 WL 6 Ip.	15 14 WP 8 IIp.	15 14 WP 8 IIp.	26 12 WK 23 IVp.	10 4 W Bar part.
16 16 WL 6 Ip.	16 16 WP 7 Ip.	16 14 WK 12 IIp. "E"	17 1 WK 7 Ip.(z).	9 3 20 4 WL 19 IIIp.	9 3 20 4 WL 19 IIIp.	17 1 WK 7 Ip.(z).	17 1 WK 7 Ip.(z).	16 16 WP 7 Ip.	16 14 WP 8 IIp.	16 14 WP 8 IIp.	27 12 WK 23 IVp.	11 8 W Bar part.
17 13 WL 20 IIIp.	17 13 WL 20 IIIp.	17 15 WK 13 IIp.	18 13 7 WL 7 Ip.	10 3 21 14 WL 11 IIp.	10 3 21 14 WL 11 IIp.	18 13 7 WL 7 Ip.	17 1 WK 7 Ip.(z).	17 13 WL 20 IIIp.	17 14 WP 8 IIp.	17 14 WP 8 IIp.	28 12 WK 23 IVp.	10 4 W Bar part.
18 10 WL 27 IVp.	18 10 WL 27 IVp.	18 9 WK 13 IIp.	19 8 WK 7 Ip.(z).	11 3 22 15 WL 33 Vp.	11 3 22 15 WL 33 Vp.	19 8 WK 7 Ip.(z).	17 1 WK 7 Ip.(z).	18 10 WL 27 IVp.	18 14 WP 8 IIp.	18 14 WP 8 IIp.	29 12 WK 23 IVp.	11 8 W Bar part.
19 7 WL 34 Vp.	19 7 WL 34 Vp.	19 13 WK 13 IIp.	17 1 WK 7 Ip.(z).	9 3 20 4 WL 19 IIIp.	9 3 20 4 WL 19 IIIp.	17 1 WK 7 Ip.(z).	17 1 WK 7 Ip.(z).	19 7 WL 34 Vp.	19 11 WP 17 IIIp.	19 11 WP 17 IIIp.	30 12 WK 23 IVp.	10 4 W Bar part.
20 19 WL 34 Vp.	20 19 WL 34 Vp.	20 6 WK 33 Vp.-zal.	18 13 7 WL 7 Ip.	10 3 21 14 WL 11 IIp.	10 3 21 14 WL 11 IIp.	18 13 7 WL 7 Ip.	17 1 WK 7 Ip.(z).	20 19 WL 34 Vp.	20 14 WP 8 IIp.	20 14 WP 8 IIp.	31 12 WK 23 IVp.	11 8 W Bar part.
21 7 WL 34 Vp.	21 7 WL 34 Vp.	21 14 WK 12 IIp. "E"	19 8 WK 7 Ip.(z).	11 3 22 15 WL 33 Vp.	11 3 22 15 WL 33 Vp.	19 8 WK 7 Ip.(z).	17 1 WK 7 Ip.(z).	21 7 WL 34 Vp.	21 14 WP 8 IIp.	21 14 WP 8 IIp.	32 12 WK 23 IVp.	10 4 W Bar part.
22 13 WL 20 IIIp. "E"	22 13 WL 20 IIIp. "E"	22 15 WK 13 IIp.	17 1 WK 7 Ip.(z).	9 3 20 4 WL 19 IIIp.	9 3 20 4 WL 19 IIIp.	17 1 WK 7 Ip.(z).	17 1 WK 7 Ip.(z).	22 13 WL 20 IIIp. "E"	22 14 WP 8 IIp.	22 14 WP 8 IIp.	33 12 WK 23 IVp.	11 8 W Bar part.
23 16 WL 13 IIp.	23 16 WL 13 IIp.	23 9 WK 26 IVp.-zal.	18 13 7 WL 7 Ip.	10 3 21 14 WL 11 IIp.	10 3 21 14 WL 11 IIp.	18 13 7 WL 7 Ip.	17 1 WK 7 Ip.(z).	23 16 WL 13 IIp.	23 14 WP 8 IIp.	23 14 WP 8 IIp.	34 12 WK 23 IVp.	10 4 W Bar part.
24 10 WL 13 IIp.	24 10 WL 13 IIp.	24 14 WK 12 IIp. "E"	19 8 WK 7 Ip.(z).	11 3 22 15 WL 33 Vp.	11 3 22 15 WL 33 Vp.	19 8 WK 7 Ip.(z).	17 1 WK 7 Ip.(z).	24 10 WL 13 IIp.	24 14 WP 8 IIp.	24 14 WP 8 IIp.	35 12 WK 23 IVp.	11 8 W Bar part.
25 14 WP 6 Ip.	25 14 WP 6 Ip.	25 9 WK 26 IVp.-zal.	17 1 WK 7 Ip.(z).	9 3 20 4 WL 19 IIIp.	9 3 20 4 WL 19 IIIp.	17 1 WK 7 Ip.(z).	17 1 WK 7 Ip.(z).	25 14 WP 6 Ip.	25 14 WP 8 IIp.	25 14 WP 8 IIp.	36 12 WK 23 IVp.	10 4 W Bar part.
26 12 WP 13 IIp.	26 12 WP 13 IIp.	26 14 WK 12 IIp. "E"	18 13 7 WL 7 Ip.	10 3 21 14 WL 11 IIp.	10 3 21 14 WL 11 IIp.	18 13 7 WL 7 Ip.	17 1 WK 7 Ip.(z).	26 12 WP 13 IIp.	26 14 WP 8 IIp.	26 14 WP 8 IIp.	37 12 WK 23 IVp.	11 8 W Bar part.
27 9 WP 27 IVp.	27 9 WP 27 IVp.	27 15 WK 13 IIp.	19 8 WK 7 Ip.(z).	11 3 22 15 WL 33 Vp.	11 3 22 15 WL 33 Vp.	19 8 WK 7 Ip.(z).	17 1 WK 7 Ip.(z).	27 9 WP 27 IVp.	27 14 WP 8 IIp.	27 14 WP 8 IIp.	38 12 WK 23 IVp.	10 4 W Bar part.
28 6 WP 34 Vp.	28 6 WP 34 Vp.	28 9 WK 26 IVp.-zal.	17 1 WK 7 Ip.(z).	9 3 20 4 WL 19 IIIp.	9 3 20 4 WL 19 IIIp.	17 1 WK 7 Ip.(z).	17 1 WK 7 Ip.(z).	28 6 WP 34 Vp.	28 14 WP 8 IIp.	28 14 WP 8 IIp.	39 12 WK 23 IVp.	11 8 W Bar part.
29 11 WL 34 Vp.	29 11 WL 34 Vp.	29 13 WK 13 IIp.	18 13 7 WL 7 Ip.	10 3 21 14 WL 11 IIp.	10 3 21 14 WL 11 IIp.	18 13 7 WL 7 Ip.	17 1 WK 7 Ip.(z).	29 11 WL 34 Vp.	29 14 WP 8 IIp.	29 14 WP 8 IIp.	40 12 WK 23 IVp.	10 4 W Bar part.
30 23 WL 34 Vp.	30 23 WL 34 Vp.	30 6 WK 33 Vp.-zal.	19 8 WK 7 Ip.(z).	11 3 22 15 WL 33 Vp.	11 3 22 15 WL 33 Vp.	19 8 WK 7 Ip.(z).	17 1 WK 7 Ip.(z).	30 23 WL 34 Vp.	30 14 WP 8 IIp.	30 14 WP 8 IIp.	41 12 WK 23 IVp.	11 8 W Bar part.
31 22 WL 34 Vp.	31 22 WL 34 Vp.	31 14 WK 12 IIp. "E"	17 1 WK 7 Ip.(z).	9 3 20 4 WL 19 IIIp.	9 3 20 4 WL 19 IIIp.	17 1 WK 7 Ip.(z).	17 1 WK 7 Ip.(z).	31 22 WL 34 Vp.	31 14 WP 8 IIp.	31 14 WP 8 IIp.	42 12 WK 23 IVp.	10 4 W Bar part.
32 22 WL 34 Vp.	32 22 WL 34 Vp.	32 9 WK 26 IVp.-zal.	18 13 7 WL 7 Ip.	10 3 21 14 WL 11 IIp.	10 3 21 14 WL 11 IIp.	18 13 7 WL 7 Ip.	17 1 WK 7 Ip.(z).	32 22 WL 34 Vp.	32 14 WP 8 IIp.	32 14 WP 8 IIp.	43 12 WK 23 IVp.	11 8 W Bar part.
33 23 WL 34 Vp.	33 23 WL 34 Vp.	33 14 WK 12 IIp. "E"	19 8 WK 7 Ip.(z).	11 3 22 15 WL 33 Vp.	11 3 22 15 WL 33 Vp.	19 8 WK 7 Ip.(z).	17 1 WK 7 Ip.(z).	33 23 WL 34 Vp.	33 14 WP 8 IIp.	33 14 WP 8 IIp.	44 12 WK 23 IVp.	10 4 W Bar part.
34 23 WL 34 Vp.	34 23 WL 34 Vp.	34 9 WK 26 IVp.-zal.	17 1 WK 7 Ip.(z).	9 3 20 4 WL 19 IIIp.	9 3 20 4 WL 19 IIIp.	17 1 WK 7 Ip.(z).	17 1 WK 7 Ip.(z).	34 23 WL 34 Vp.	34 14 WP 8 IIp.	34 14 WP 8 IIp.	45 12 WK 23 IVp.	11 8 W Bar part.

(44)

WK 4 IIIp. 1 14 9 14 WL 4 IIIp.
 2 14 10 19 WL 3 IIIp.
 3 14 11 16 WL 2 Ip.
 WK 2 Ip. 4 12 12 12 WL 1 p.
 5 16
 6 12 OKAP 2 Ip.
 7 19 OKAP 4 Ip.
 WK 3 IIIp. 8 16

WK 1 p. 13 15 14 12
 14 18
 15 18
 16 16
 17 12
 18 4

(45)

1 16 WC 3 IIIp.+WC 4 IIIp.
 2 13 WC 1 p.+WC 2 Ip.

(43)

8 5
 7 15
 6 15
 5 18
 4 18
 3 11
 2 6
 1 8
 WP 4 IIIp.
 WP 2 Ip.
 WP 4 IIIp.

(42)

Kominek 9 IIp. 1 9
 2 12
 3 18
 4 17
 5 17
 6 13 WP 1 p.
 7 17 WP 2 Ip.
 8 17 WP 9 IIp.
 9 14 WP 4 IIIp.
 10 14

(40)

1 15 WK okap 5 p.
 2 15 WK okap 7 Ip.
 3 10 WK 11 IIIp.
 4 7
 5 7 WK okap 11 IIIp.
 6 18 WK 9 IIp.
 7 17 WL 7 Ip.
 8 14

(41)

1 5 WL 11 IIIp.
 2 9
 3 12 WL 7 Ip.
 4 16 WL 5 p.
 5 10
 6 5
 7 10 Kominek 9 IIp.
 8 18
 9 17
 10 18
 11 15 WP 7 Ip.
 12 16 WP 9 IIp.
 13 13 WC 5 p.
 14 8
 15 5
 16 15 WC 7 Ip.
 17 8 WL 9 IIp.
 18 8 WC 9 IIp.
 19 5 WC 11 IIIp.

10

Część II

WK 13 p.
WK 17 IIp.

WK 15 Ip.
WK 19 IIIp.

29

28

1 15 3 11
2 7 4 3

1 16
2 12
3 10
4 8

W. suter.

(30)
1 9
2 7

6 0
5 0

WL 13 p.
WL 17 IIp.

(26)
1 7
2 8
3 14
4 7

WK 14a p.

5 13
6 14

WL 14a p.

WL 13 p.
WL 14 p.
WL 15 Ip.
WL 19 IIIp.

(33)

(24)
WK 20 IIIp.
WK 18 IIIp.
WK 16 Ip.

1 4 4 4
2 7 5 6
3 9 6 9

1 9 3 10 WP 15 Ip.
2 13 4 11 WP 19 IIIp.

(32)

(31)
1 16 W. suter.
2 18

WC 19 IIIp. 1 5 3 11 WC 15 Ip.
WC 17 IIp. 2 8 4 9 WC 13p.

(34)

4 4
3 6
2 14 WL + WP 13 p.
1 2

(25)
1 11
2 15

(36)
1 18
2 17
3 19
4 19

(35)
1 18
2 17
3 16
4 18

(38)
1 5 3 8
2 11 4 5

WL 6 p.
WL 8 Ip.
WL 10 IIp.
WL 12 IIIp.
WC 8 Ip.
WC 6 p.
WC 10 IIp.

5 15 9 15 WK 6 p.
6 15 10 10 WK 10 IIp.
7 13 11 5 WK 12 IIIp.
8 9 12 5 WC 12 IIIp.

2 10
1 6 3 (39)

(14) 2-116
11-117

WK 24 lp. 11-123-17 WK 28 IIIp.
WK 22 p. 2-115 4-118

(15)

(16) 2-117
11-113

8-104 WK okap 27 IIIp.
7-107 WK okap 25 IIp.
6-110 OK AP 23 lp.
5-113 WK 21 p.
4-117 WK 23 lp.
3-117
2-117 WK 25 IIp.
1-117

(17)

3-117 WK 14 p.
2-118
1-113 (18)

WC 21 p. 4-113 8-106 WL 27 IIIp.
WC 23 lp. 3-110 7-109 WL 25 IIp.
WC 25 IIp. 2-117 6-112 WL 23 lp.
WC 27 IIIp. 1-114 5-114 WL 21 p.

(21)

(19) 2-115
11-115

11-112 WC 14 p.
2-113 WL 14 p.

(20)

6-153-112 WL 16 lp.
5-112-117 WL 18 IIp.
4-115-114 WL 20 IIIp.

(23)

(22) 11-117
2-117
3-116

ul Nowowiejska 22 mieszkalny - 2022 r

12

WK 35 IIP. 3-18 11-112 WK 32 IIP.
WK 29 p. 4-114 2-15 WK 38 IIIp.
5-116 9-118
6-113 10-19
7-110
8-17

20-16
10-17
(2)

WC 34 IIP. 2-17 4-14 WC 40 IIIp.
WC 31 p. 11-113 3-110 WC 37 IIP.
WK 34 IIP. 12-111 13-05 WK 40 IIIp.
WK 31 p. 14-01 15-10 8 WK 37 IIP.

(3)
1-11 WC 29 p.
2-11 WC 32 IIP.
3-18 WC 35 IIP.
4-15 WC 38 IIIp.

6-19 5-118
7-18 4-111
8-11 3-16
9-10 2-15
10-10 4-12
11-08

WL 40 IIIp. 2-4 1-7 WL 37 IIP.
WL 34 IIP. 4-10 3-13 WL 31 p.

(4)
WL 38 IIIp. 2-15 4-18 WL 35 IIP.
WL 32 IIP. 11-113 1-14 WL 29 p.

Okap 36 IIP. 2-18 WK 33 IIP. 11-19 3-116 WK 30 p.
11-116
(6)

(9)
1-14 WC 39 IIIp.
2-16 WC 36 IIP.
3-110 WC 33 IIP.
4-112 WC 30 p.

Część IV

(10)
WL 33 IIP. 2-110 4-14 WL 39 IIIp.
WL 30 p. 11-113 3-17 WL 36 IIP.

(11)
1-12 WK 26 IIP.+ WK 28 IIIp.

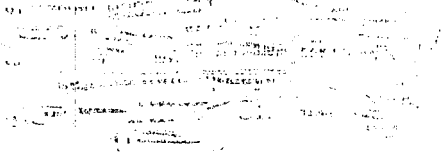
(12)
WL 24 IIP. 11-110 3-14 WL 28 IIIp.
WL 22 p. 2-113 4-17 WL 26 IIP.

(13)
1-14 WC 22 p.
2-110 WC 24 IIP.
3-17 WC 26 IIP.
4-14 WC 28 IIIp.

13

6

WF. 25 VIp. 1 5
WF. 29 VIIp. 2 2



5

WK 29 VIp. 1 5
WK 25 VIp. 2 7

4

WK 4 I+8 II+12 III+16 IV+20 Vp.
WK 24 VIp. 4 6
WK 28 VIp. 5 2
WF. 24 VIp. 2 2
WF. 28 VIp. 3 5
WF. 24 VIIp. 6 2
WF. 4 I+8 II+12 III+16 IV+20 Vp.

3

W Zsyp VIIp. 1 6
W Zsyp VIp+IVp+IIp. 2 2

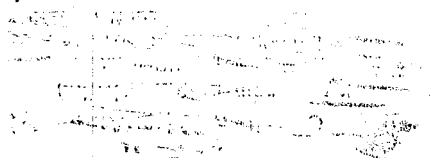
2

WK 26 VIIp. 1 4
WK 22 VIp. 2 7
WK 1 p+2 I+6 II+10 III+14 IV+18 Vp. 4 7
WL 1 p+2 I+6 II+10 III+14 IV+18 Vp. 3 7
WL 22 VIp. 5 7
WL 26 VIIp. 6 4

1

WK 7 II+11 III+15 IV+19 Vp. 1 2
WK 23 VIp. 3 2
WK 27 VIIp. 4 5
WF. 7 II+11 III+15 IV+19 Vp. 2 2
WF. 23 VIp. 5 5
WF. 27 VIIIp. 6 2

M



WL 67 Vlp. 1 2 3 21 WL 61 Vlp. 2 5 3 21 WL 55 V+49 IV+43 III+37 II+31 Ip. 7

8

WL 67 Vlp. 1 2 3 21 WK 61 Vlp. 2 5 3 21 WK 55 V+49 IV+43 III+37 II+31 Ip.

WL 62 Vlp. 1 2 3 21 WL 62 Vlp. 2 3 21 WL 56 V+50 IV+44 III+38 II+32 Ip.

10

WL 56 V+32 Ip+WL 50 IV+44 IIIp. 4 21 WL 68 Vlp. 5 6 21 WL 62 Vlp. 5 6 21 WL 66 Vlp. 2 2 21 WL 66 Vlp. 1 2 3 21 WL 66 Vlp. 5 6 21 WL 54 Vp+48 IV+42 III+36 II+39 Ip. WL 54 V+48 IV+30 Ip+WK 42 IIIp. 4 20 WK 60 Vlp. 5 6 21 WL 66 Vlp.

11

W Zsyp Vlp. 1 5 2 26 W Zsyp VI+IV+IIp.

12

W suter. 1 24

13

WL 69 Vlp. 1 2 4 21 WL 57 V+51 IV+45 III+39 II+33 Ip. WL 63 Vlp. 2 5 4 21 WL 69 Vlp. 5 6 21 WK 63 Vlp. 5 6 21 WK 69 Vlp. 5 6 21 WK 63 Vlp. 5 6 21 WK 69 Vlp. 5 6 21

14

WL 65 Vlp. 1 5 2 21 WL 71 Vlp. 5 6 21 WK 59 V+WL 47 IIIp. 3 21 WL 65 Vlp. 5 6 21 WL 71 Vlp. 5 6 21 WL 59 V+53 IV+47 III+41 II+35 Ip.

15

WL 70 Vlp. 1 3 3 21 WK 58 V+52 IV+46 III+40 II+34 Ip. WK 64 Vlp. 2 5 3 21

16

WL 70 Vlp. 1 2 3 21 WL 58 V+52 IV+46 III+40 II+34 Ip. WL 64 Vlp. 2 5 3 21

SV

WK 90 V+86 IV+78 II+74 Ip. $\left[\begin{array}{c} 2 \\ 24 \\ 5 \\ 6 \end{array} \right]$ WK 94 VIp.
 WK 98 VIIp. $\left[\begin{array}{c} 2 \\ 24 \\ 5 \\ 6 \end{array} \right]$
 WL 90 V+86 IV+78 II+74 Ip. $\left[\begin{array}{c} 1 \\ 24 \\ 4 \\ 3 \end{array} \right]$ WL 94 VIp.
 WL 98 VIIp. $\left[\begin{array}{c} 1 \\ 24 \\ 4 \\ 3 \end{array} \right]$

22

WK 95 VIp. $\left[\begin{array}{c} 3 \\ 21 \\ 5 \\ 6 \end{array} \right]$ WK 99 VIIp. $\left[\begin{array}{c} 2 \\ 21 \\ 5 \\ 6 \end{array} \right]$ WK 91 V+87 IV+83 III+79 II+75 Ip.
 WL 95 VIp. $\left[\begin{array}{c} 4 \\ 21 \\ 5 \\ 6 \end{array} \right]$ WL 99 VIIp. $\left[\begin{array}{c} 1 \\ 21 \\ 5 \\ 6 \end{array} \right]$ WL 91 V+87 IV+83 III+79 II+75 Ip.

21

W Zsyp VIIp. II $\left[\begin{array}{c} 6 \\ 20 \\ 2 \end{array} \right]$ W Zsyp VI+V+IIp.

20

WK 96 VIIp. II $\left[\begin{array}{c} 4 \\ 24 \\ 3 \\ 2 \end{array} \right]$ WK 92 VIp. $\left[\begin{array}{c} 2 \\ 24 \\ 3 \\ 2 \end{array} \right]$ WK 88 V+84 IV+80 IIIp+76 II+72 Ip.

19

WK 89 V+85 IV+81 III+77 II+73 Ip+ okap 77 IIp. $\left[\begin{array}{c} 3 \\ 21 \\ 5 \\ 6 \end{array} \right]$ WK 97 VIIp. $\left[\begin{array}{c} 3 \\ 21 \\ 5 \\ 6 \end{array} \right]$ WK 93 VIp. $\left[\begin{array}{c} 3 \\ 21 \\ 5 \\ 6 \end{array} \right]$
 WL 97 VIIp. $\left[\begin{array}{c} 1 \\ 21 \\ 4 \\ 2 \end{array} \right]$ WL 93 VIp. $\left[\begin{array}{c} 2 \\ 21 \\ 4 \\ 2 \end{array} \right]$ WL 89 V+85 IV+81 III+77 II+73 Ip. $\left[\begin{array}{c} 2 \\ 21 \\ 4 \\ 2 \end{array} \right]$

18

WL 92 VIp. $\left[\begin{array}{c} 1 \\ 21 \\ 3 \\ 2 \end{array} \right]$ WL 96 VIIp. $\left[\begin{array}{c} 2 \\ 21 \\ 3 \\ 2 \end{array} \right]$ WL 88 V+84 IV+76 II+72 Ip.

17

16

6

WF. 25 Vlp. 1 5
WF. 29 Vlp. 2 2
WF. 5 I+9 II+13 III+17 IV+21 Vp. 3 20

5

WK 29 Vlp. 1 5
WK 25 Vlp. 2 7
WK 5 I+9 II+13 III+17 IV+21 V+9 Itp. 3 24

4

WK 4 I+8 II+12 III+16 IV+20 Vp. 1 21
WK 24 Vlp. 4 5
WK 28 Vlp. 2 2
WK 24 Vlp. 2 2
WF. 24 Vlp. 2 2
WF. 24 Vlp. 3 5
WF. 4 I+8 II+12 III+16 IV+20 Vp. 6 21

3

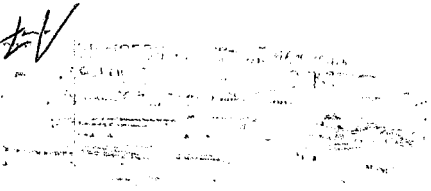
W Zsyp Vlp. 1 6
W Zsyp Vlp+IVp+Itp. 2 27

2

WK 26 Vlp. 1 4
WK 22 Vlp. 2 7
WK 1 p+ 2 I+6 II+10 III+14 IV+18 Vp. 4 27
WF. 22 Vlp. 3 5
WF. 26 Vlp. 6 4
WF. 1 p+ 2 I+6 II+10 III+14 IV+18 Vp. 5 27

1

WK 7 II+11 III+15 IV+19 Vp. 1 24
WK 23 Vlp. 3 2
WF. 7 II+11 III+15 IV+19 Vp. 2 24
WF. 23 Vlp. 5 5
WF. 27 Vlp. 6 2



WF. 67 VIp. 1 2 3 21 WF. 61 VIp. 2 5

7

WK 67 VIp. 1 2 3 21 WK 61 VIp. 2 5

8

WF. 62 VIp. 2 5 21 WF. 68 VIp. 3 2

WF. 56 V+50 IV+44 III+32 Ip. 1 2 5 21 WK 55 V+49 IV+43 III+37 II+31 Ip. 2 3 5 21

WF. 68 VIp. 5 2 6 5 WK 62 VIp.

WF. 54 Vp+48 IV+42 III+36 II+39 Ip. 1 2 2 21 WF. 66 VIp. 3 5

WK 60 VIp. 5 6 3 WF. 66 VIp.

WF. 54 V+48 IV+30 Ip+WK 42 IIIp. 4 20

10

WK 56 V+32 Ip+WF.50 IV+44 IIIp. 4 21

W Zsyp VIp. 1 5 2 26 W Zsyp VI+IV+Iip.

11

W suter. 1 24

12

WF. 69 VIp. 1 2 4 21 WF. 57 V+51 IV+45 III+39 II+33 Ip. 2 5 4 21 WK 63 VIp. 5 5 WK 69 VIp. 6 3

13

WF. 65 VIp. 1 5 2 2 WK. 71 VIp.

14

WK 59 V+WF.47 IIIp. 3 21

WF. 59 V+53 IV+47 III+41 II+35 Ip. 4 21 5 5 WF. 65 VIp. 6 3 WF. 71 VIp. 7 10

15

WK 70 VIp. 1 3 6 21 WK 58 V+52 IV+46 III+40 II+34 Ip. 2 3 6 21

16

WF. 70 VIp. 1 2 3 21 WF. 64 VIp. 2 5

18

WK 90 V+86 IV+78 II+74 Ip. 2 | 24 | 5 | 6 | 5
 WK 98 VIIp. 2 | 24 | 5 | 6 | 5
 WL 94 VIp. 1 | 24 | 4 | 5 | 5
 WL 98 VIIp. 1 | 24 | 3 | 4 | 5

(22)

WK 99 VIIp. 2 | 24 | 5 | 6 | 5
 WK 95 VIp. 3 | 24 | 5 | 6 | 5
 WL 91 V+87 IV+83 III+79 II+75 Ip. 1 | 24 | 5 | 6 | 5
 WL 99 VIIp. 1 | 24 | 5 | 6 | 5
 WL 95 VIp. 1 | 24 | 4 | 5 | 5

(21)

WZsyp VIIp. II 6 | 2 | 20 | WZsyp VI+IV+IIp.
 (20)

WK 96 VIIp. II 4 | 24 | 3 | 4 | 5
 WK 92 VIp. 2 | 24 | 3 | 4 | 5
 WK 88 V+84 IV+80 IIIp+76 II+72 Ip.

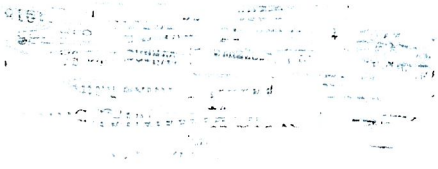
(19)

WK 89 V+85 IV+81 III+77 II+73 Ip+okap 77 IIp. 3 | 24 | 5 | 6 | 5
 WK 93 VIp. 2 | 24 | 5 | 6 | 5
 WL 97 VIIp. 1 | 24 | 4 | 5 | 5
 WL 89 V+85 IV+81 III+77 II+73 Ip.

(18)

WL 92 VIp. I 5 | 24 | 3 | 4 | 5
 WL 96 VIIp. 2 | 24 | 3 | 4 | 5
 WL 88 V+84 IV+76 II+72 Ip.

(17)



21 00
 22 00
 7 03
 8 15
 9 08 W/P 6 I/p.
 10 02 WL 27 IV p. "E"
 11 06 W/P 15 III p.
 12 08 W/P 9 II p.
 13 11
 14 06 W/P 14 III p.
 15 04
 16 02 W/K 27 IV p. okap
 23 00
 17 12
 18 15 W/K 2 part.
 19 14
 20 17

WP 20 I/p. 6 II 3
 WP 22 II p. 5 I 7
 WC 24 III p. 4 I 4
 WL 2 part. 3 I 13
 WL 18 part. 2 I 16
 WL 20 I/p. 1 I 12
 (7)

1 12
 2 10
 3 04
 4 04
 5 14
 6 18
 7 14

(6)

WL 24 III p. "E"

14 WL 18 part.
 2 WL 20 I/p.
 3 WL 20 I/p.
 4 WWC 22 II p.
 5 WWC 24 III p. "E"
 6 B
 7 WL 22 II p.

1 03 W/P 24 III p.
 2 06 W/P 22 II p.
 3 10 W/P 20 I/p.
 4 14 W/P 18 part.
 5 17
 6 17

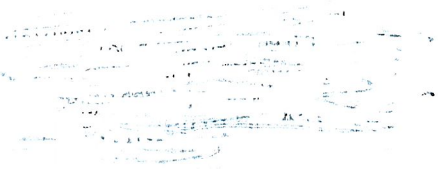
1 11 W/K 20 I/p.
 2 04 W/K 24 III p.
 3 07 W/K 22 II p.
 4 14 W/K 18 part.
 5 12
 6 14
 7 12
 8 09

(4)

1 12 W/K 21 I/p.
 2 05 W/K 25 III p.
 3 08 W/K 23 II p.
 4 00 W/K 19 part.
 5 14
 6 14
 7 11
 8 11

(2)

1 09
 2 02
 3 04
 4 12
 5 11 WL 21 I/p.
 6 08 W/P 23 II p.
 7 04 W/P 25 III p.
 8 14 W/P 19 part.
 9 17
 10 17
 11 15
 12 07 WL 23 II p.
 13 11 WWC 21 I/p.
 14 04 WWC 25 III p.
 15 14 WWC 19 part.
 16 01
 17 06
 18 09



(9)

WLC 27 Ivp. 12 40 WL 5 Ivp. "E" 12 48 40-43 WL 26 Ivp. "E" 12 115
 WL 14 IIIp. 24 51 6 WWC 9 Ivp. "E" WC 8 Ivp. 24 49 51 17 WL 12 Ivp. "E" 12 115
 WL 27 Ivp. "E" WL 27 Ivp. 32 62 612 WWC 1 part. WWC 4 part. 32 112 64 WWC 17 IIIp. 24 114
 74 OKAP 14 IIIp. 74 8 WK 1 okap 9 Ivp. 8 7-15
 8 WK 1 part. 11 12 WK 1 part. 11 12 WK 5 Ivp. 12 8 WK 5 Ivp.
 10 115 10-115 WK 26 Ivp. 10-115 WK 12 IIIp. 9-113 WK 12 IIIp.
 WK 4 part. 11 12 13 4 WK 17 IIIp. 12-9 14-11 WK 8 Ivp.

(8)

12-14 WK 16 IIIp. 11 4 13 11
 WK 15 IIIp. 11 4 14-14 WP 3 part. 21 6 14-14
 3 9 15-9 4-10 16-11 WK 1 okap 7 Ivp. 5-10 17-14 WWC 3 part. "E" 6 2 18 8 WK 11 Ivp.
 WK 1 okap 10 Ivp. 7 6 19 5 8-113 WK 6 Ivp. - BRAK
 "E" WL 10 Ivp. 9 6 20 6 WL 11 Ivp. WL 6 Ivp. 10 8 21 9 WL 7 Ivp.
 WL 15 IIIp. 11 4 22 13 WL 16 IIIp.

(12)

1 2
 2 16 WP 11 Ivp.
 3 7
 4 15
 5 5
 6 9 WP 7 Ivp.
 7 12 Wkorytarz 3 part.
 8 12
 9 17
 10 4 WP 17 IIIp.
 11 13
 12 12
 13 10 WP 8 Ivp.
 14 9
 15 3 WP 16 IIIp.

(13)

11 110
 2 110

LEGENDA	
<input type="checkbox"/>	Przewód kominiowy o wylocie górnym.
<input checked="" type="checkbox"/>	Przewód kominiowy o wylocie bocznym.
<input checked="" type="checkbox"/>	Przewód kominiowy zakończony na stychu.
<input checked="" type="checkbox"/>	Przewód kominiowy o wylocie bocznym jednostronnym.
<input checked="" type="checkbox"/>	Przewód kominiowy o wylocie zakończonym nasadą wiatrochronną.
<input checked="" type="checkbox"/>	Nieszczelne szanki działowe pomiędzy przewodami
<input checked="" type="checkbox"/>	mb
<input checked="" type="checkbox"/>	9
<input checked="" type="checkbox"/>	Dróżność przewodu w mb. † z prawej strony
<input checked="" type="checkbox"/>	Kolejny numer przewodu kominiowego † z lewej strony
<input checked="" type="checkbox"/>	Kolejny numer pionu kominiowego.
WK	- Wentylacja kuchni
WT	- Wentylacja łazienki
WP	- Wentylacja pokoju
WVC	- Wentylacja WC
WCO	- Wentylacja kłówni - CO
PG	- Piec gazowy - kapielowy /Pg-6/
PGCO	- Kocioł gazowy CO
RI	- Rozeta w łazience
P	- Piec węglowy
K	- Kuchnia węglowa
RP	- Rozeta w pokoju
RK	- Rozeta w kuchni
E	- Wentylator elektryczny
OK	- okap elektryczny