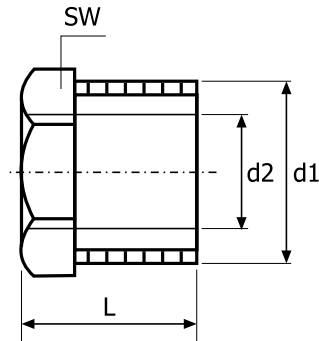


# Złączki gwintowane gwint BSP, ciśnienie PN10

d1	d2	SW
1/4"	1/8"	21 mm
3/8"	1/8"	24 mm
	1/4"	24 mm
1/2"	1/4"	26 mm
	3/8"	26 mm
3/4"	1/4"	32 mm
	3/8"	32 mm
	1/2"	37 mm
	3/8"	37 mm
1"	1/2"	37 mm
	3/4"	37 mm
1 1/4"	1/2"	47 mm
	3/4"	47 mm
	1"	47 mm
1 1/2"	3/4"	54 mm
	1"	54 mm
	1 1/4"	54 mm
2"	1"	63 mm
	1 1/4"	63 mm
	1 1/2"	63 mm
2 1/2"	1 1/4"	87 mm
	1 1/2"	87 mm
	2"	87 mm
3"	1 1/2"	95 mm
	2"	95 mm
	2 1/2"	95 mm

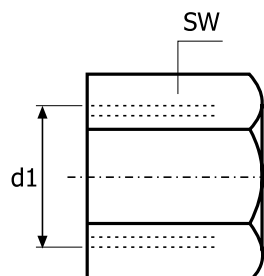


## 325

Redukcja  
gwint wewnętrzny / zewnętrzny, DIN 2990.  
Wykonanie stal 316.



NW	d1	SW
6	1/8"	14 mm
8	1/4"	18 mm
10	3/8"	21 mm
15	1/2"	27 mm
20	3/4"	32 mm
25	1"	39 mm
32	1 1/4"	49 mm
40	1 1/2"	55 mm
50	2"	68 mm
65	2 1/2"	84 mm
80	3"	98 mm
100	4"	125 mm



## 326

Zaślepka sześciokątna  
gwint wewnętrzny DIN2991.  
Wykonanie stal 316.

